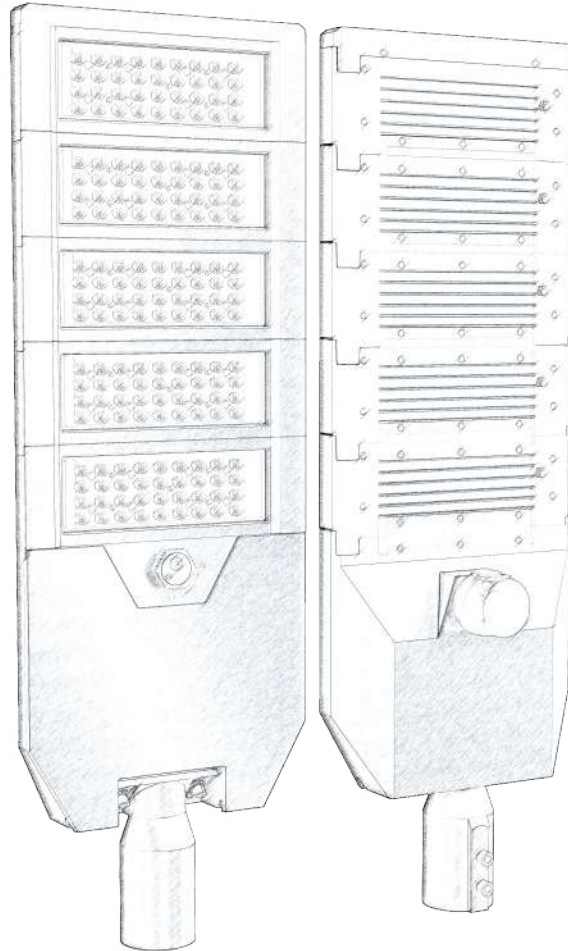


# TECHNICAL SPECIFICATION



<b>Specification Revision:</b>		
RevA0	Primary Released	Date: 15-Sep-2023
RevA1 or B0	Updated Notes	Date:
Approved By	Verified By	Drafted By
Mike Lee	Lista Lee	Tyler Hou

**Model SL09-JL-GW**



**Electrical Specification**

POWER	100W	200W	300W	400W	500W
Driver Brand	MOSO				
Input Voltage	120 ~ 277 VAC				
POWER FACTOR	>0.95				
Base	N/A (Option of NEMA / ZHAGA)				
Dimmable	N/A (Option of PHOTOCCELL / DALI )				
Intelligent Control	N/A (Option of Zigbee Wireless / Laura )				
SPD	4KV Line-Line, 6KV Line-Earth				
Working Temperature	-40°C - 70°C				

**Photometrical Specification**

Luminous Efficacy	140lm/W				
LED CHIP	PHILIPS 2835				
Color Temperature	Option of 4000K / 5000K/ 5700K				
Color Rendering Index	>80				
Beam Angle	Type II (m) Options of Type I (m)				
THD	<20%				

**Mechanical Specification**

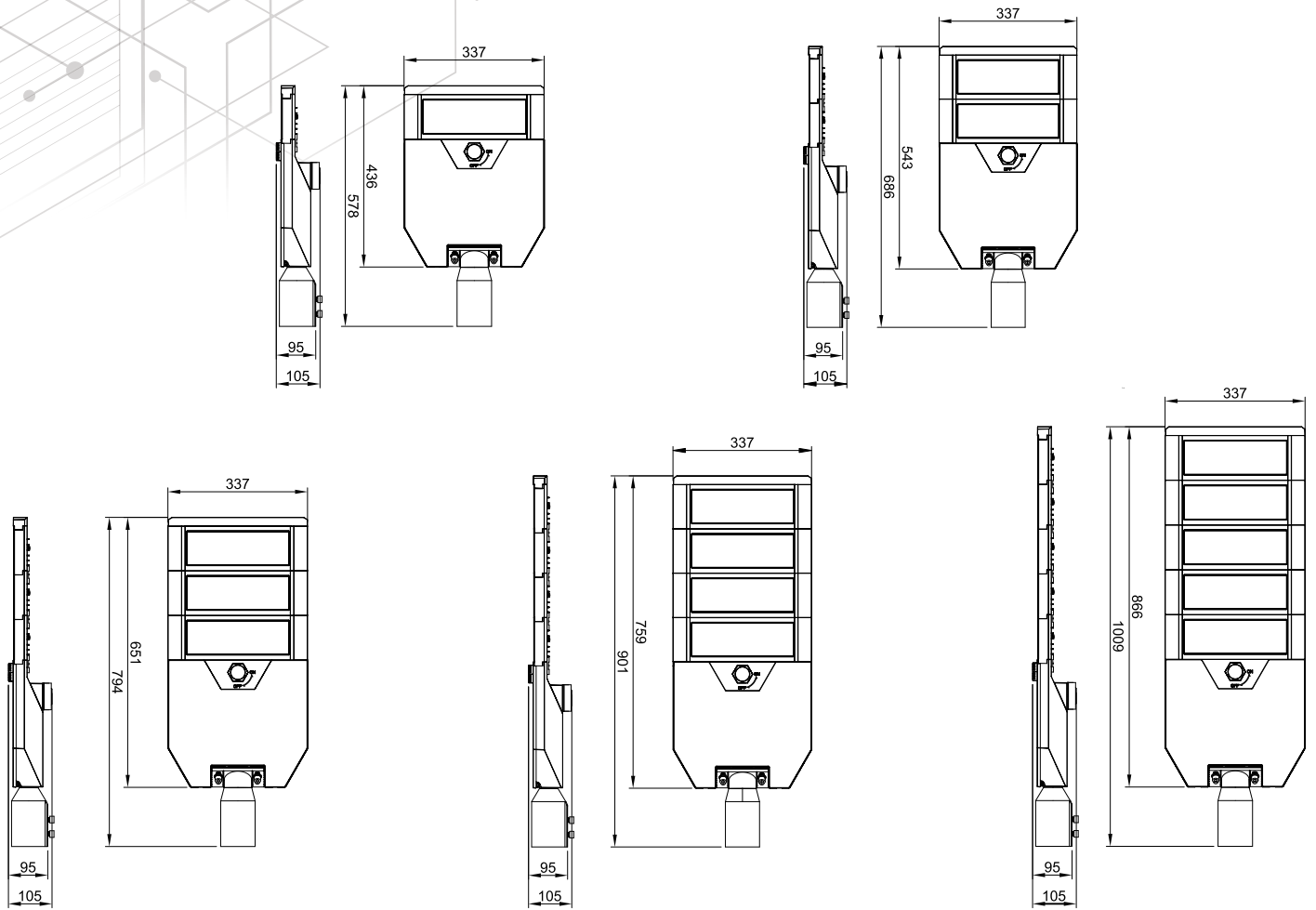
Body Material	Die Cast Aluminium Housing				
Housing Color	Black				
Mounting Type	Wall / Pole				
Mounting Location	40-60mm				
Cable Length	300mm (input)				

**Standards & Certificates**

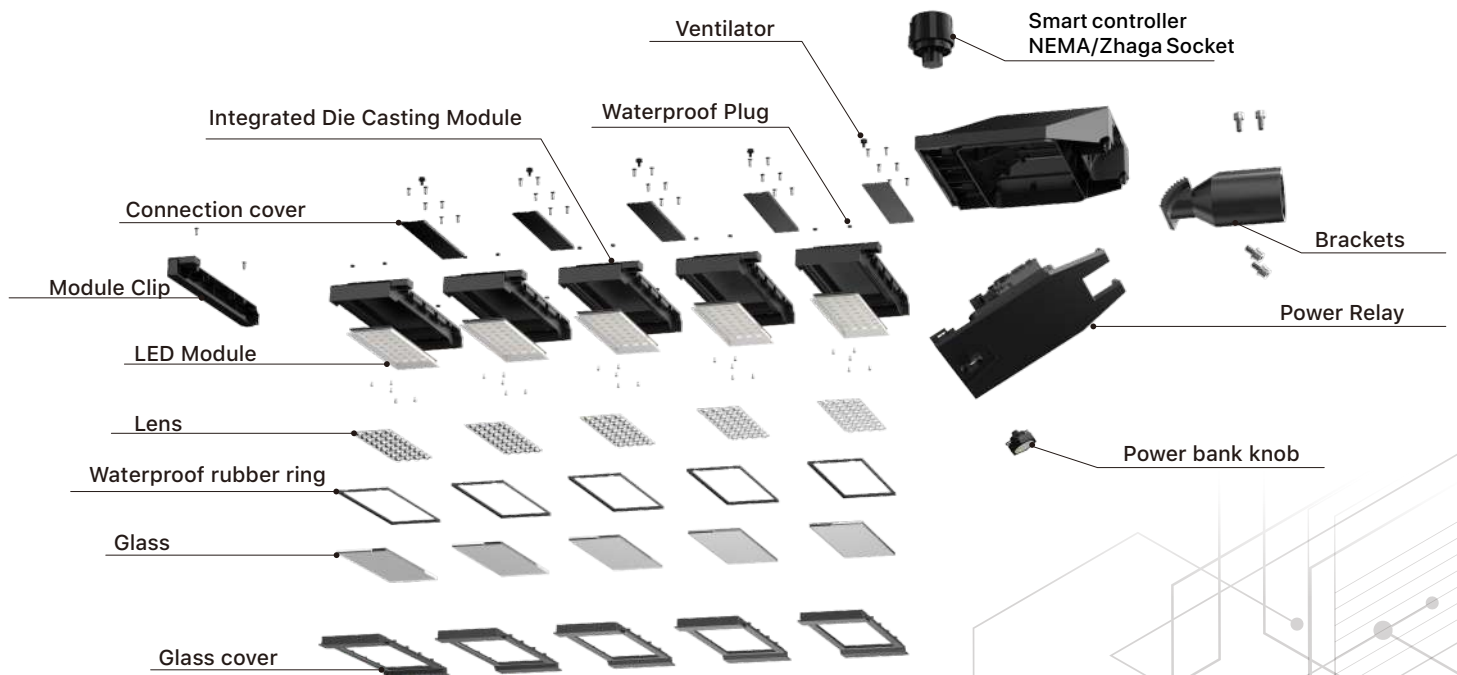
Ingress Protection	IP66				
IK	IK08				
Salt Spray	C1 Anti-Corrosion				
Certificates	CE, ROHS				
Warranty	5 Years				

**Dimension & Weight**

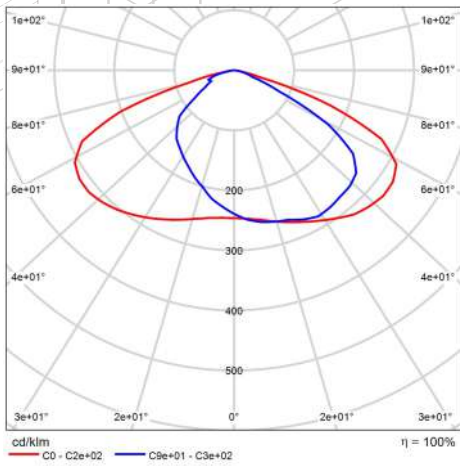
Fixture Dimension (mm)	578*337*105	686*337*105	794*337*105	901*337*105	1009*337*105
Fixture Weight (kg)	13.34	16.07	9.96	/	/
Packing	2	1	1	1	1
Carton Dimension(mm)	625*410*290	770*420*310	835*410*220	/	/
Gross Weight (Kg)	15.57	17.72	11.52	/	/



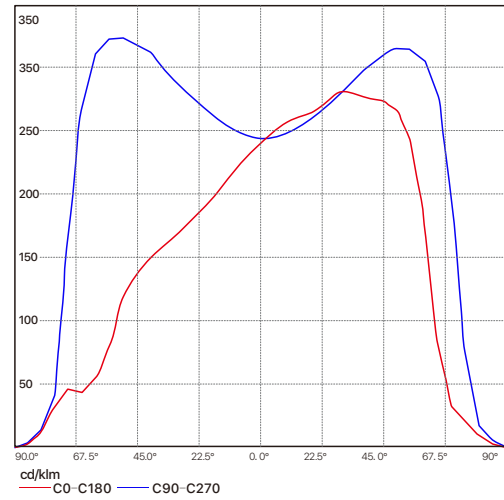
## Structure Diagrams



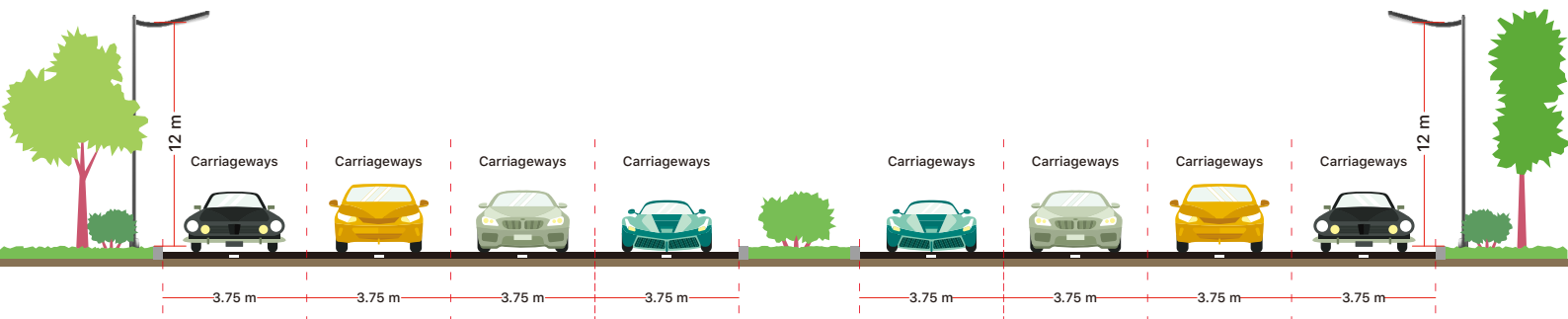
Polar Candela Distribution Plot



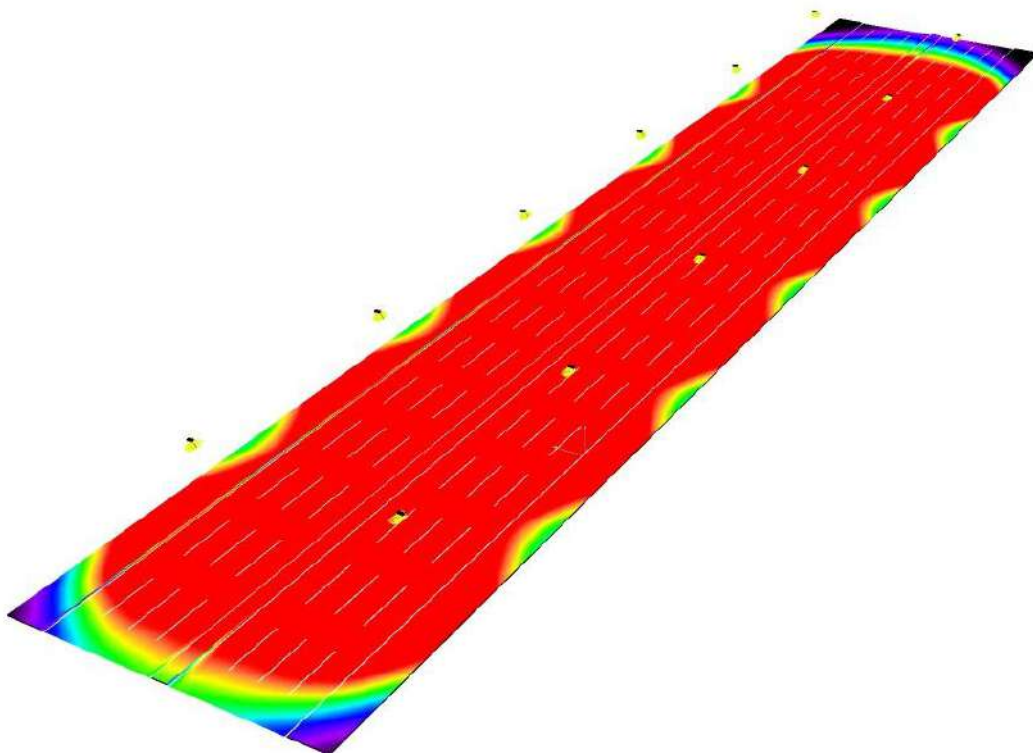
Rectangular Candela Distribution Plot

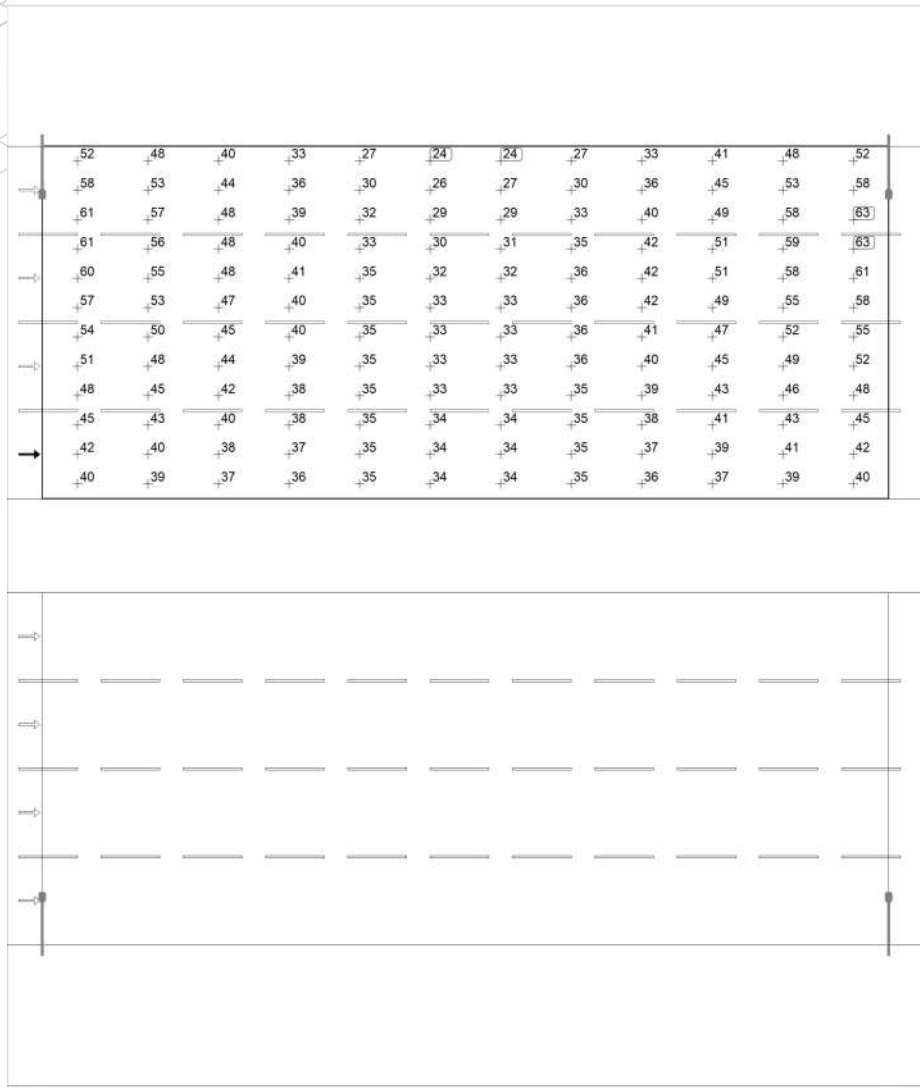


### Typell-S



Bi-directional eight lanes; lamps and lanterns installation height 12 meters; distance between two poles 36 meters





m	1.500	4.500	7.500	10.500	13.500	16.500	19.500	22.500	25.500	28.500	31.500	34.500
39.375	52.09	47.83	40.45	32.66	26.98	24.16	24.28	27.42	33.31	41.10	48.40	52.43
38.125	57.67	52.79	44.42	35.87	29.56	26.47	26.58	29.96	36.46	44.76	52.97	57.57
36.875	61.12	56.58	47.75	38.78	32.07	28.77	28.98	32.78	39.96	48.92	57.92	62.57
35.625	61.46	56.49	48.27	39.83	33.38	30.35	30.72	34.51	41.76	50.53	58.96	62.83
34.375	60.08	55.43	48.26	40.58	34.55	31.67	32.04	35.60	42.43	50.57	57.83	61.10
33.125	57.23	53.06	47.07	40.49	35.05	32.53	32.92	36.07	42.15	49.26	55.09	57.99
31.875	54.10	50.33	45.22	39.81	35.13	33.05	33.37	36.01	41.16	47.17	51.97	54.64
30.625	51.14	47.92	43.60	39.12	34.94	33.22	33.46	35.67	40.10	45.21	49.22	51.54
29.375	48.04	45.45	42.01	38.38	34.96	33.27	33.45	35.47	39.15	43.34	46.49	48.32
28.125	44.77	42.74	40.07	37.54	35.07	33.53	33.60	35.42	38.23	41.07	43.49	44.95
26.875	42.02	40.30	38.27	36.66	35.00	33.90	33.92	35.24	37.14	38.96	40.85	42.21
25.625	40.16	38.76	37.01	36.00	34.96	34.35	34.36	35.12	36.27	37.45	39.15	40.33

Maintenance value, horizontal illuminance [lx] (Value chart)

	$E_{av}$	$E_{min}$	$E_{max}$	$g_1$	$g_2$
Maintenance value, horizontal illuminance	41.7 lx	24.2 lx	62.8 lx	0.579	0.384